

Snow surface

New snow

Settling snow

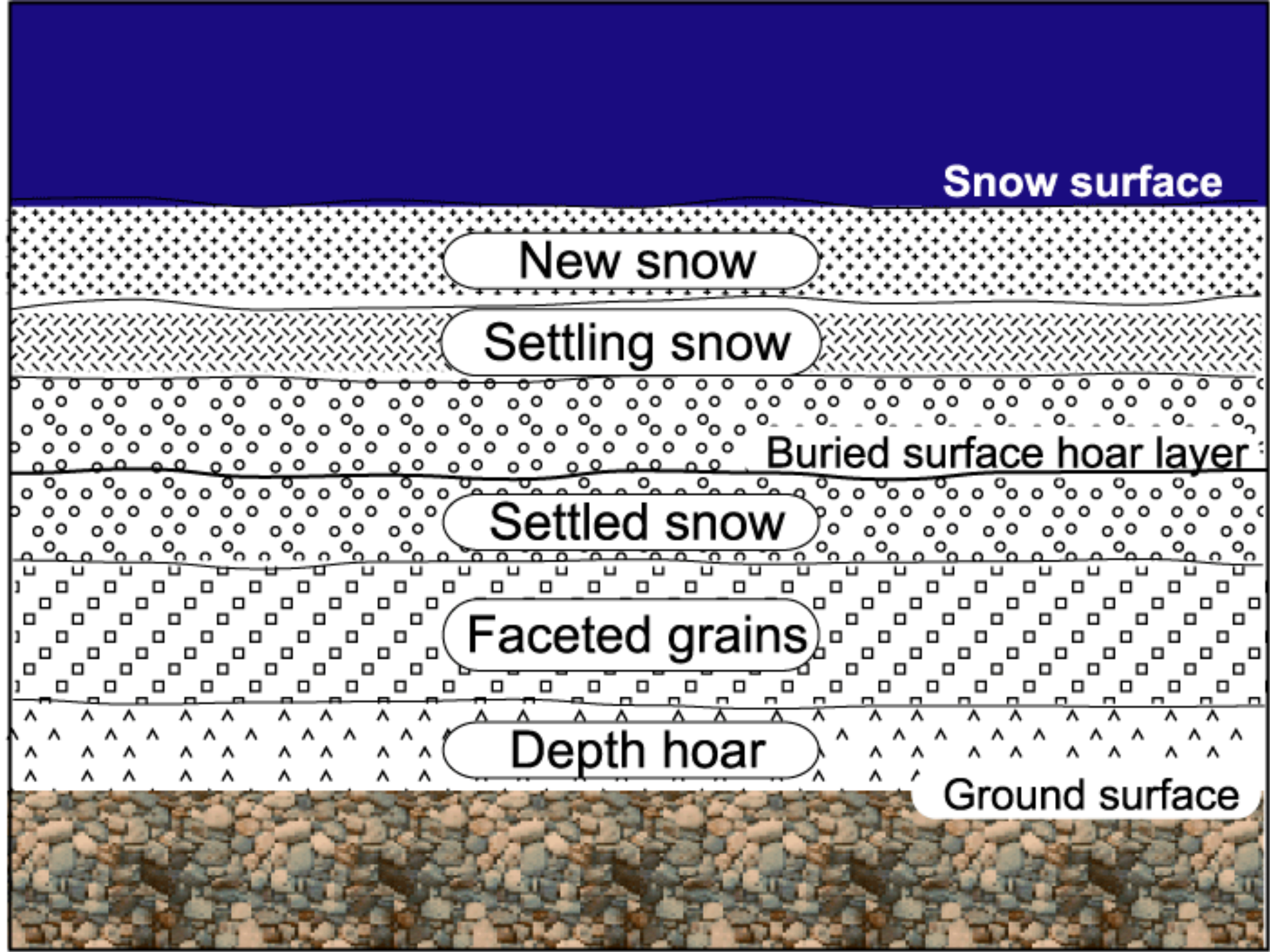
Buried surface hoar layer

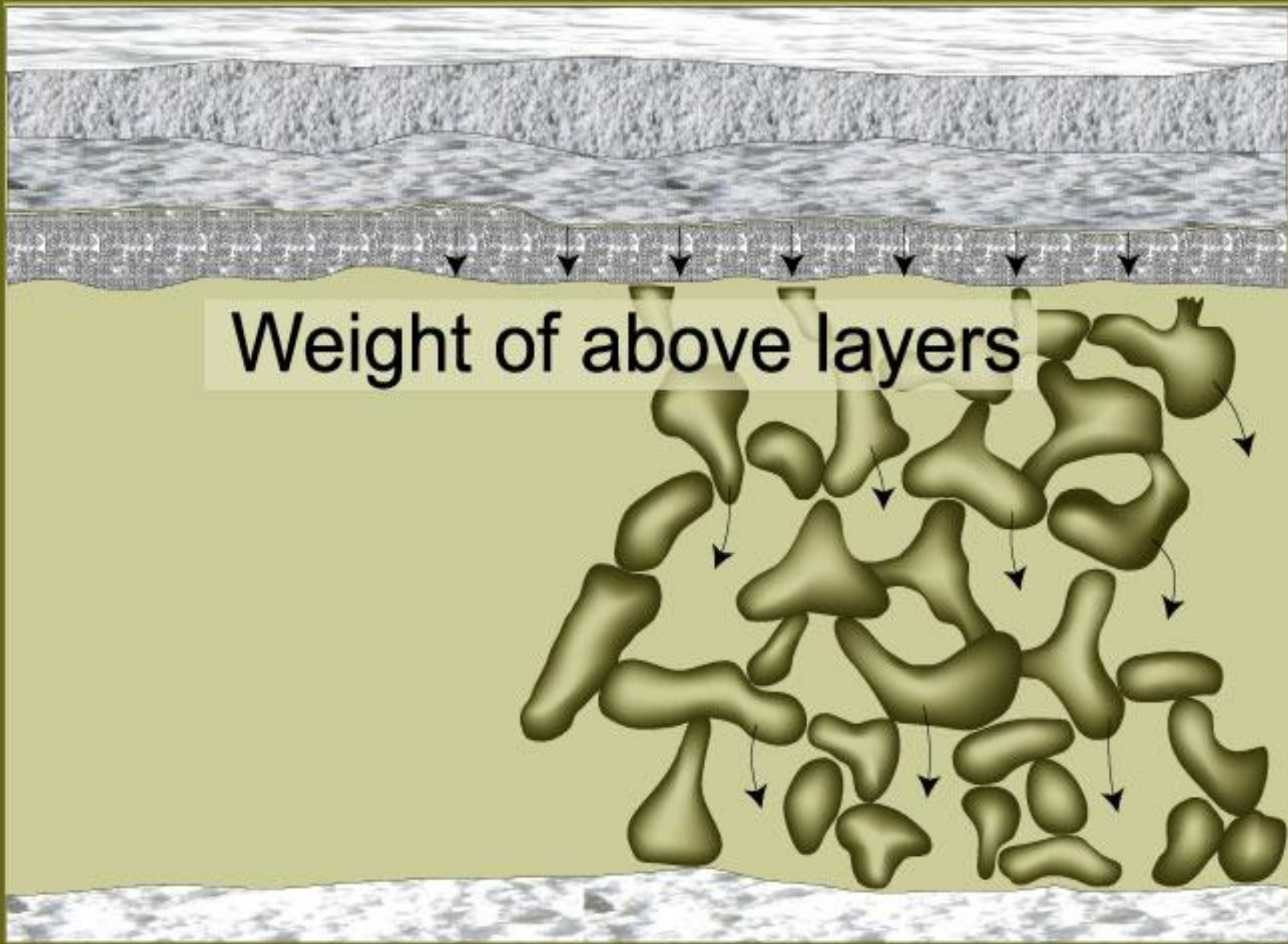
Settled snow

Faceted grains

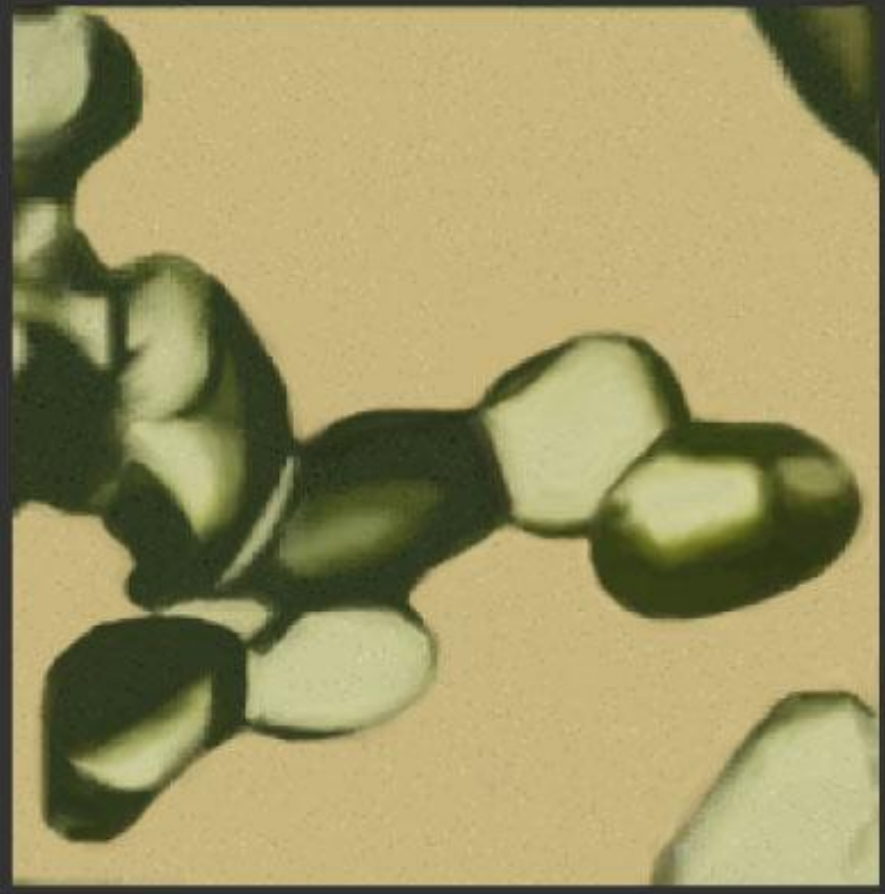
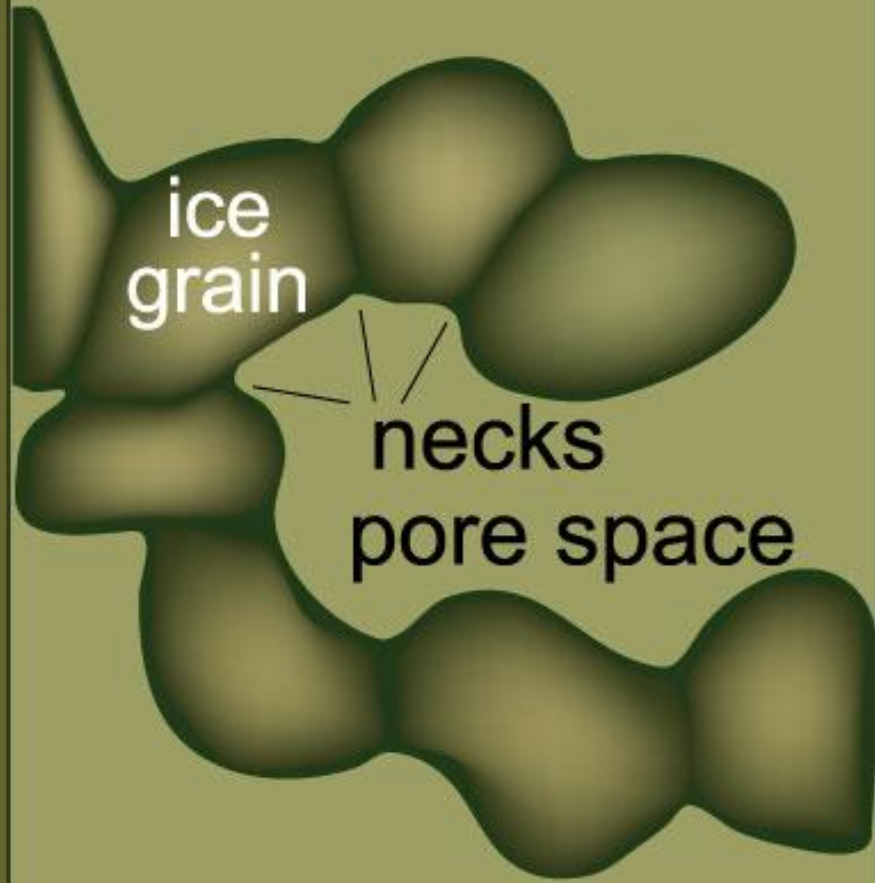
Depth hoar

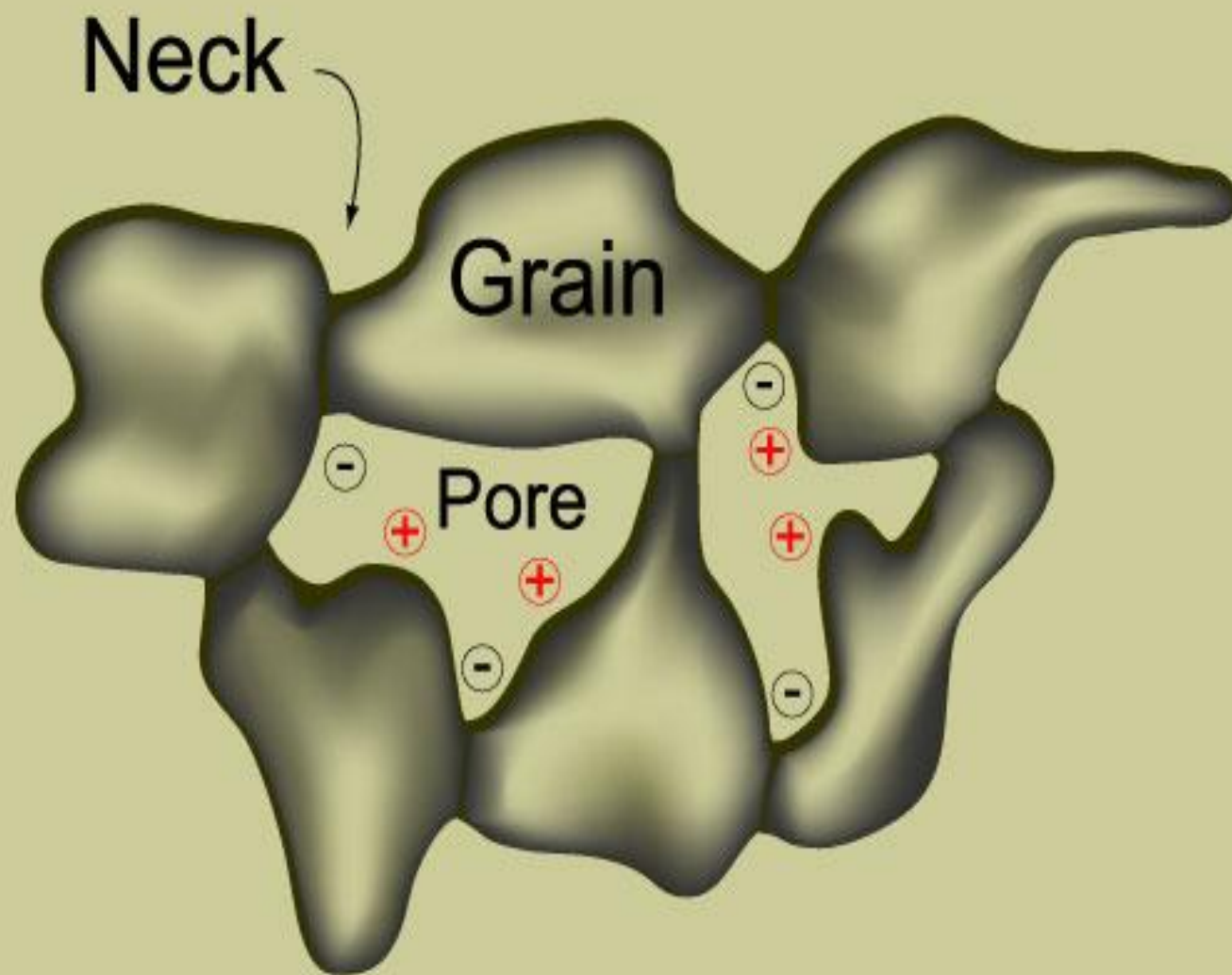
Ground surface



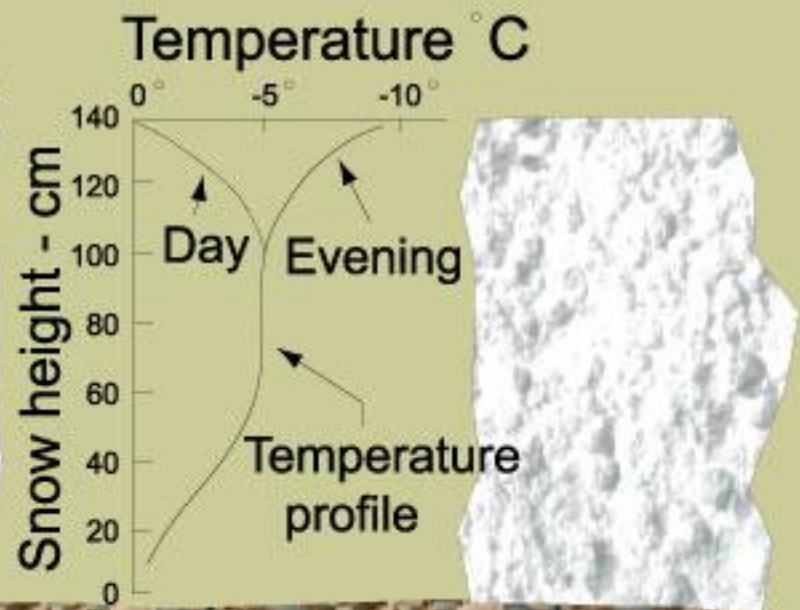


Weight of above layers





Energy exchange
with atmosphere
Snow surface



Heat supply from
solid Earth



SNOW

100 cm

SURFACE

50 cm

GROUND

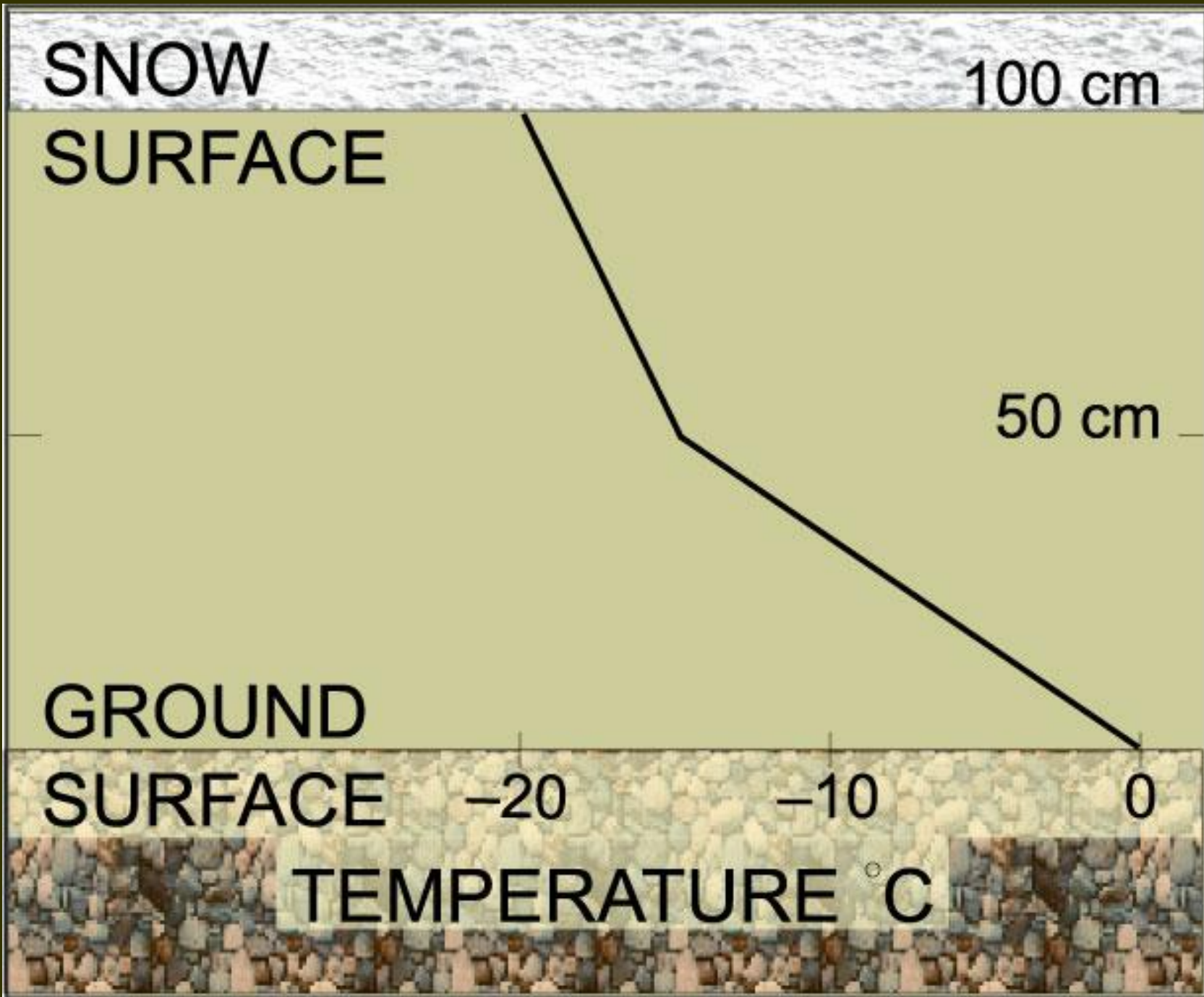
SURFACE

-20

-10

0

TEMPERATURE °C

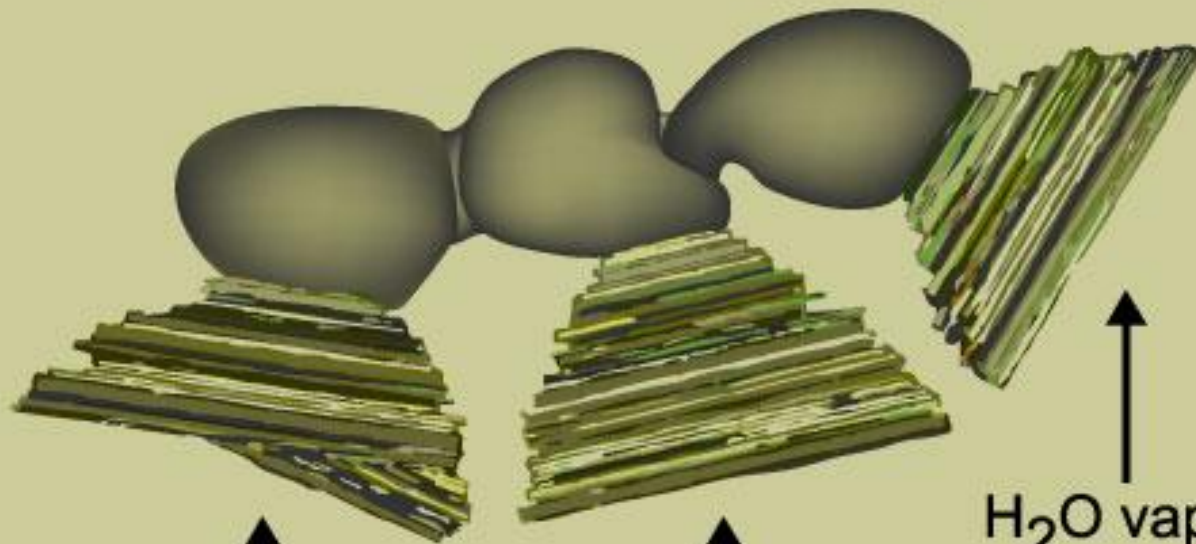


COLD



HEAT
FLUX

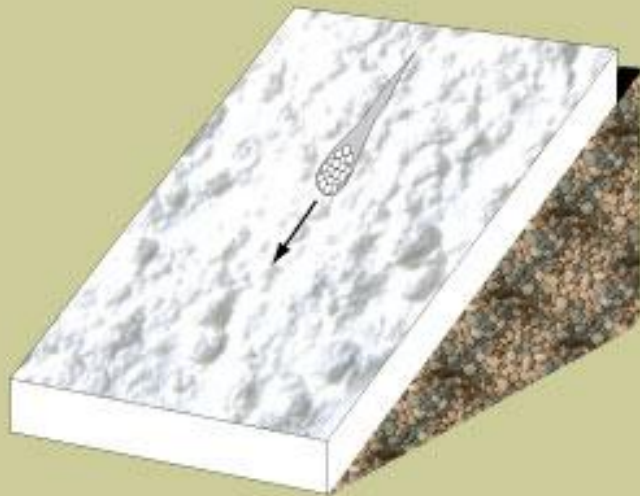
HOT



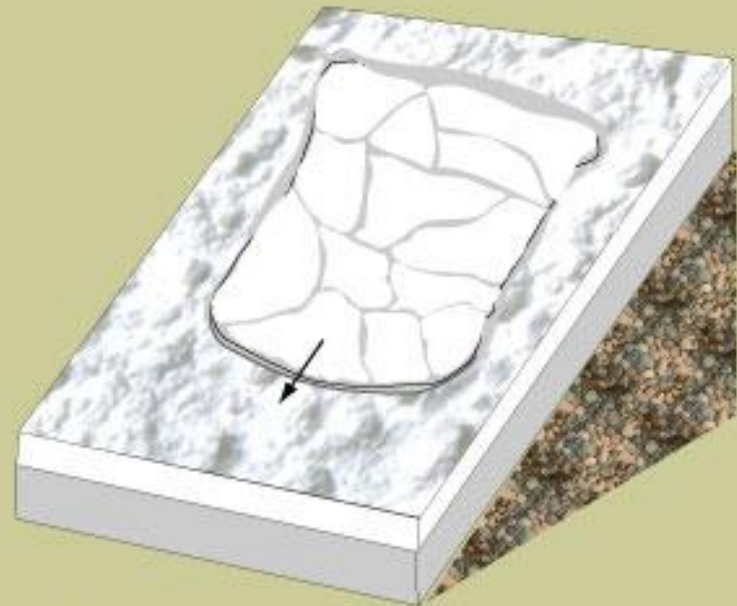
H₂O vapor

H₂O vapor

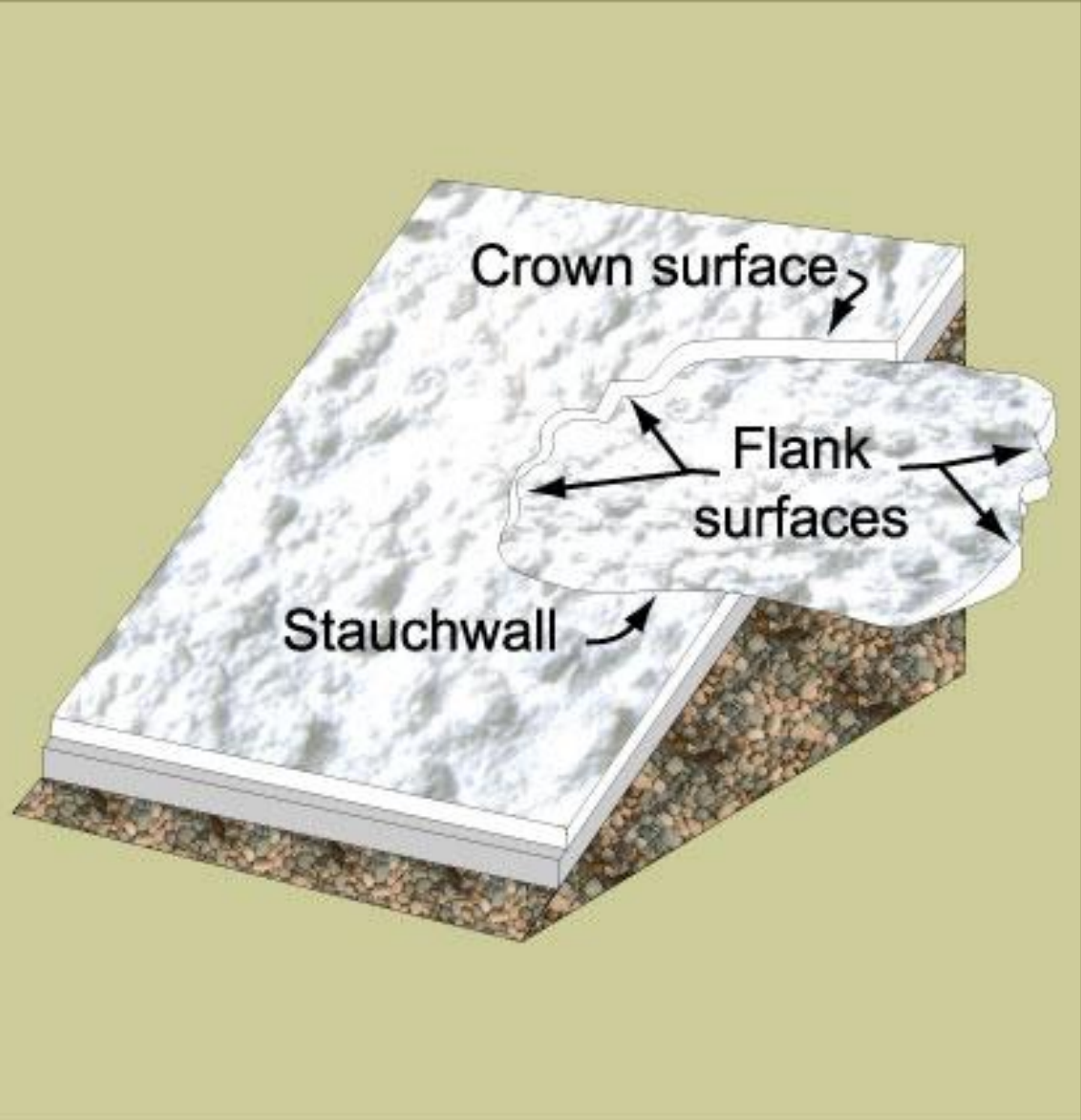
H₂O vapor

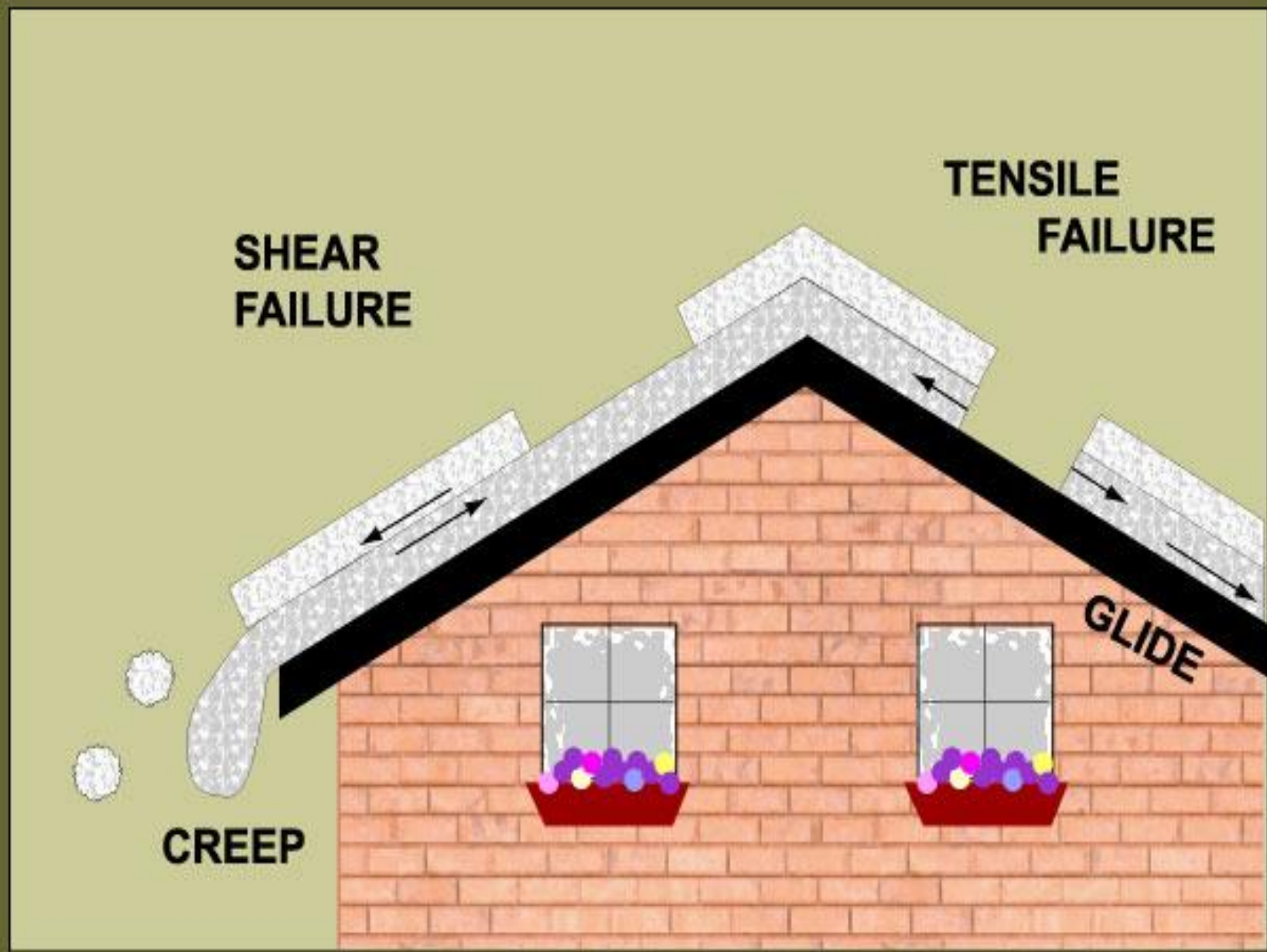


Loose snow avalanche



Slab avalanche





WANDAROUS PRODUCTIONS

